



# MODULAR REGULATOR & PULSE VALVES

## R-701

### Pressure Regulator

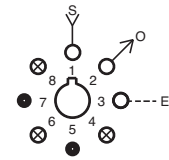
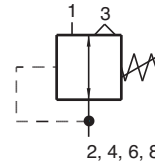


#### Features:

- Multiple porting speeds piping
- Knurled knob for fast, accurate adjustments - no tools needed
- Self-relieving

#### Performance:

**Flow:** 12 scfm @ 100 psig; 340 l/min @ 6.9 bars  
**Temperature:** 32 to 180°F  
**Working Pressure:** 0 to 150 psig; 0 to 10.3 bars



#### Description:

R-701 is a self-relieving, adjustable pressure regulator with multiple output ports. Pressure can be piped directly from ports 2, 4, 6 and 8. Eliminates need for additional fittings. Unused output ports should be plugged.

## R-711

### Pulse Valve

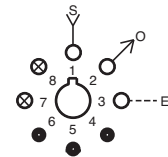
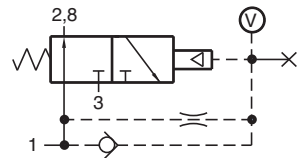


#### Features:

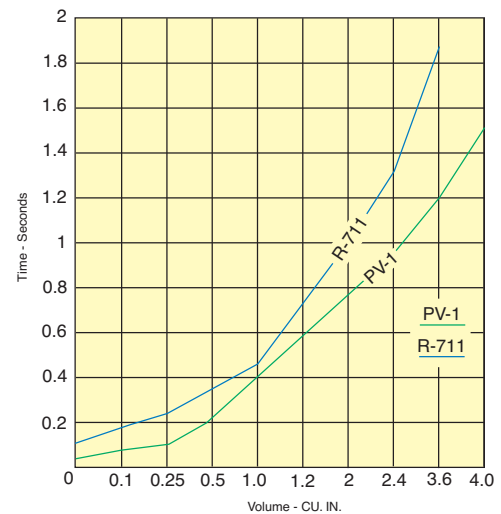
- Multiple porting speeds piping
- Micro Gap Construction - snap action and no blow by
- Complete function in one module

#### Performance:

**Flow:** 10 scfm @ 100 psig; 283 l/min @ 6.9 bars  
**Pilot Pressure Minimum:** 40 psig; 2.8 bars  
**Temperature:** 32 to 180°F  
**Working Pressure:** 40 to 150 psig; 2.8 to 10.3 bars



Time in Seconds			Time in Seconds		
Volume	PV-1	R-711	Volume	PV-1	R-711
0	0.042	0.117	1.2	0.580	0.700
0.1	0.074	0.180	2.0	0.760	1.000
0.25	0.124	0.245	2.4	0.950	1.300
0.5	0.210	0.350	3.6	1.200	1.900
1.0	0.390	0.450	4.0	1.500	N.R.



#### Description:

R-711 is a 3-way, Normally-Open, self-piloted valve that closes shortly after being pressurized and remains closed until signal pressure is exhausted. It converts a continuous input signal into a single pulse of approximately 50 milliseconds. Port 7 is provided for additional volume for extending pulse duration and should be plugged if not used.